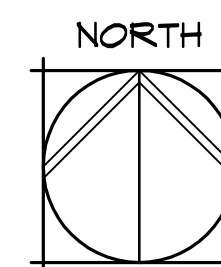
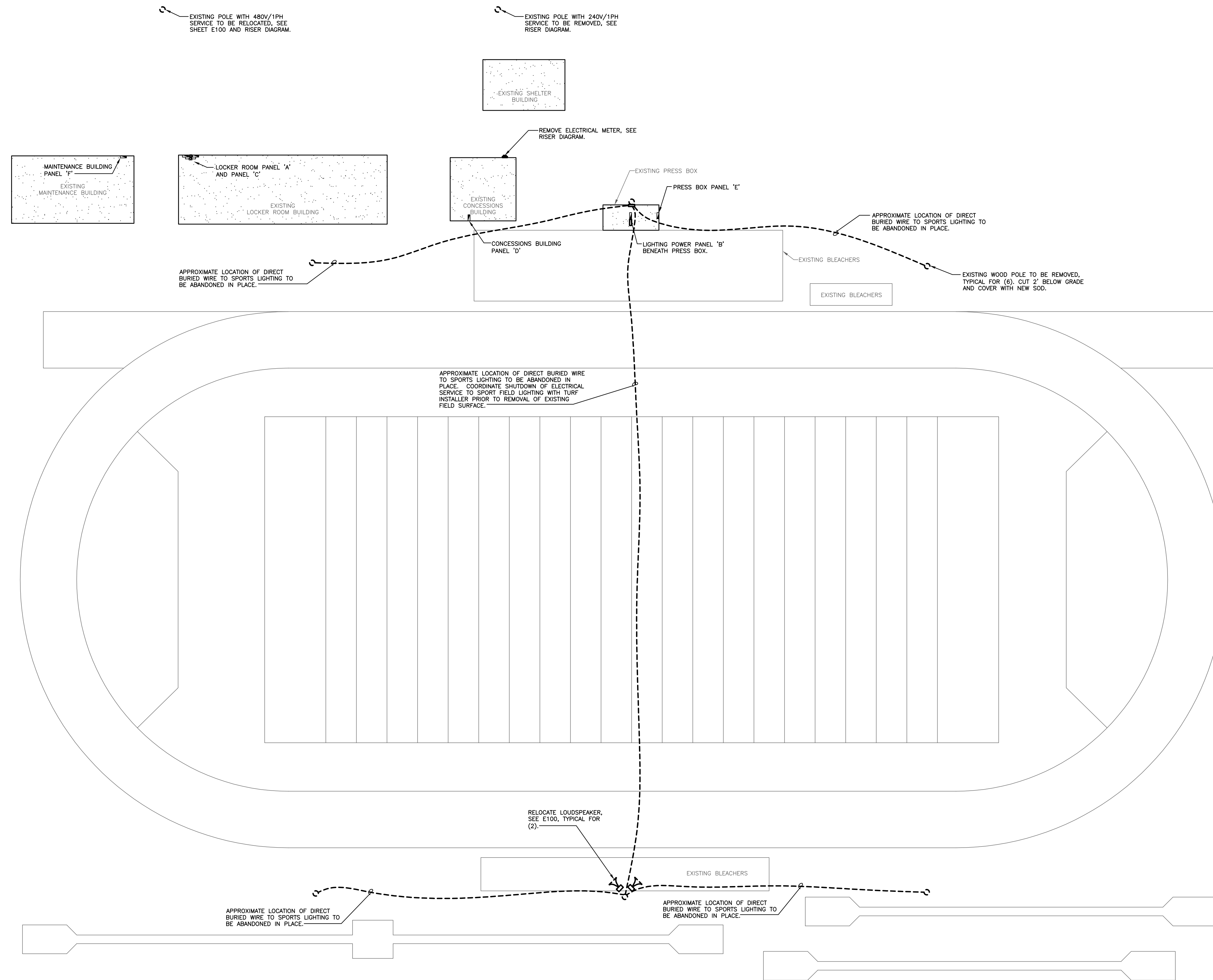


ELECTRICAL SYMBOLS LEGEND

| | |
|--------|--|
| | Flush junction box |
| | Electrical disconnect switch |
| | Conduit concealed in wall or ceiling |
| | In-floor conduit |
| | Homerun to panelboard with conductors as indicated. Do not show neutrals unless noted otherwise. |
| | Panelboard |
| | Transformer |
| | Electrical meter |
| | Trumpet intercom speaker |
| e | Existing device |
| C/B | Circuit breaker |
| U.N.O. | Unless noted otherwise |
| A.F.F. | Above finished floor |
| N.I.C. | Not in contract |
| TYP | Typical |
| G.C. | General Contractor |

GENERAL DEMOLITION NOTES

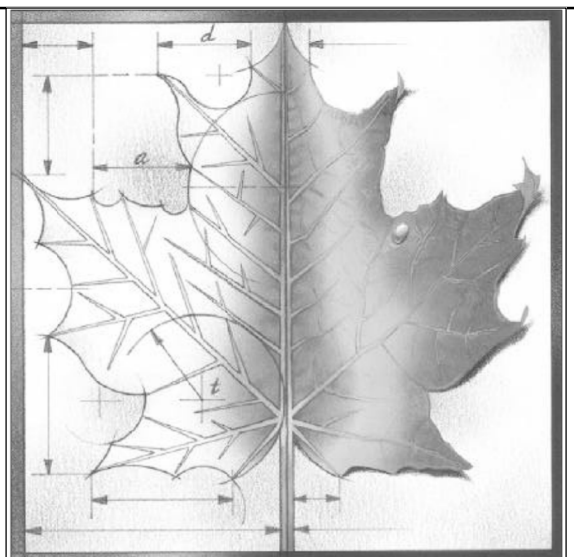
1. Remove all existing electrical installation where indicated on plans. All light fixtures, wiring devices, etc., and all associated circuitry to remain unless noted otherwise.
2. Deliver all equipment to Owner or dispose of as directed by Owner.



SPORTS COMPLEX LIGHTING DEMOLITION PLAN

1" = 30'

ose **ORAZEM & SCALORA ENGINEERING, P.A.**
 Manhattan, Kansas
 Job No. 15011-1
 Copyright © Orazem & Scalora Engineering, P.A. 2017



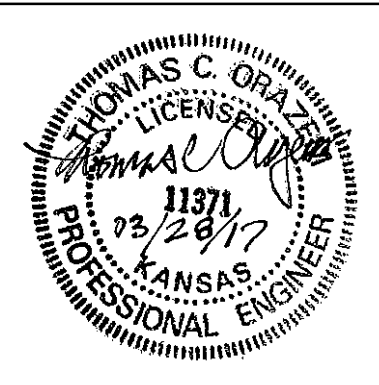
BBN

BBN ARCHITECTS INC
 228 POYNTZ AVENUE
 MANHATTAN, KS 66502
 PH: 785-776-4912
 WWW.BBNARCHITECTS.COM

Information provided on the drawings regarding existing conditions has been obtained from the best sources available, but cannot be guaranteed in all respects. Contractor shall verify all such information prior to proceeding with any new work that may be affected. Include as part of the contract all work required to produce the indicated result. All drawings and written material appearing herein constitute the original and unpublished work of the Architect, and same may not be duplicated, used or disclosed without the written consent of the Architect.
 © BBN Architects, Inc.

REVISIONS:

| | |
|---|--|
| △ | |
| △ | |
| △ | |
| △ | |
| △ | |
| △ | |



Project Number:

Date: 03/28/2016

Project Name:

WAMEGO SPORTS FIELD LIGHTING

Project Address:

4290 Columbian Rd.
 Wamego, KS 66547

Sheet Title:

ELECTRICAL SITE PLAN - DEMOLITION

Sheet:

ED100

Of:

3

GENERAL ELECTRICAL NOTES

- Do not scale these drawings.
- These drawings were produced from original drawings, field survey, and measurements. Existing site and building characteristics which are represented on these drawings are believed to be accurate. However, the Contractor shall verify all conditions, materials, and sizes at the site. The Contractor shall verify locations and sizes of all below grade and above grade circuitry, and modify as required for new work.
- Submittal of detailed electrical conduit installation shop drawings are not required. However, the Contractor shall be responsible for field verification of all dimensions and clearances for all system layouts. This shall be accomplished prior to installation.
- These drawings are a schematic representation of the work that is to be accomplished by this Contract.
- Lack of coordination between trades will not be a basis for change orders. Rework of already completed work to accommodate other trades will be performed at the Contractors' expense.
- Where services to existing equipment, devices or systems which are to remain are interrupted in this work, such services shall be restored so that the existing systems are left in working order.
- See Specifications for additional requirements.
- Coordinate cutting and patching of walls, floors, ceilings, concrete and asphalt with General Contractor. See specification section 017300.

ELECTRICAL EQUIPMENT SCHEDULE

Main Distribution Panel 'MDP' Schedule
 Distribution Panelboard, service entrance rated, 400 ampere, 277/480 volt, 1phase/3wire, 400 ampere Main Circuit Breaker, full capacity neutral, copper bussing, equipment ground, 32,000 ampere integrated equipment short circuit rating with 93" branch mounting space, NEMA 3 enclosure with locking door, and capacity for 400 ampere/2 pole branches. Physical size: 86"H x 44"W x 9.5"D. Equivalent to Square D HCR-U.

Provide branch devices:

| Ckt. | C/B | Load | Feeder | Serves |
|------|-------|----------------|-----------|----------------------|
| 1. | 40/2 | Transformer TD | 3#8,#10G | Concessions Building |
| 2. | 200/2 | Panel A | 3#3/0,#6G | Existing Locker Room |
| 3. | 200/2 | Spare | FUTURE | Future Locker Room |
| 4. | 200/2 | Panel B | 3#4/0,#4G | Field Lighting |
| 5. | 100/2 | Spare | --- | --- |
| 6. | 100/2 | Spare | --- | --- |
| 7. | 100/2 | Spare | --- | --- |

TRANSFORMERS

| Mark | KVA | Mounting | Secondary Conductors | GEC |
|------|-----|-----------|----------------------|-----|
| ID | 15 | Suspended | 3#6,#8G | #8 |

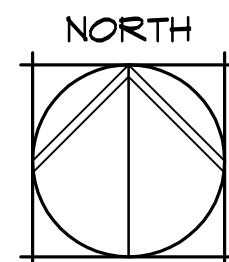
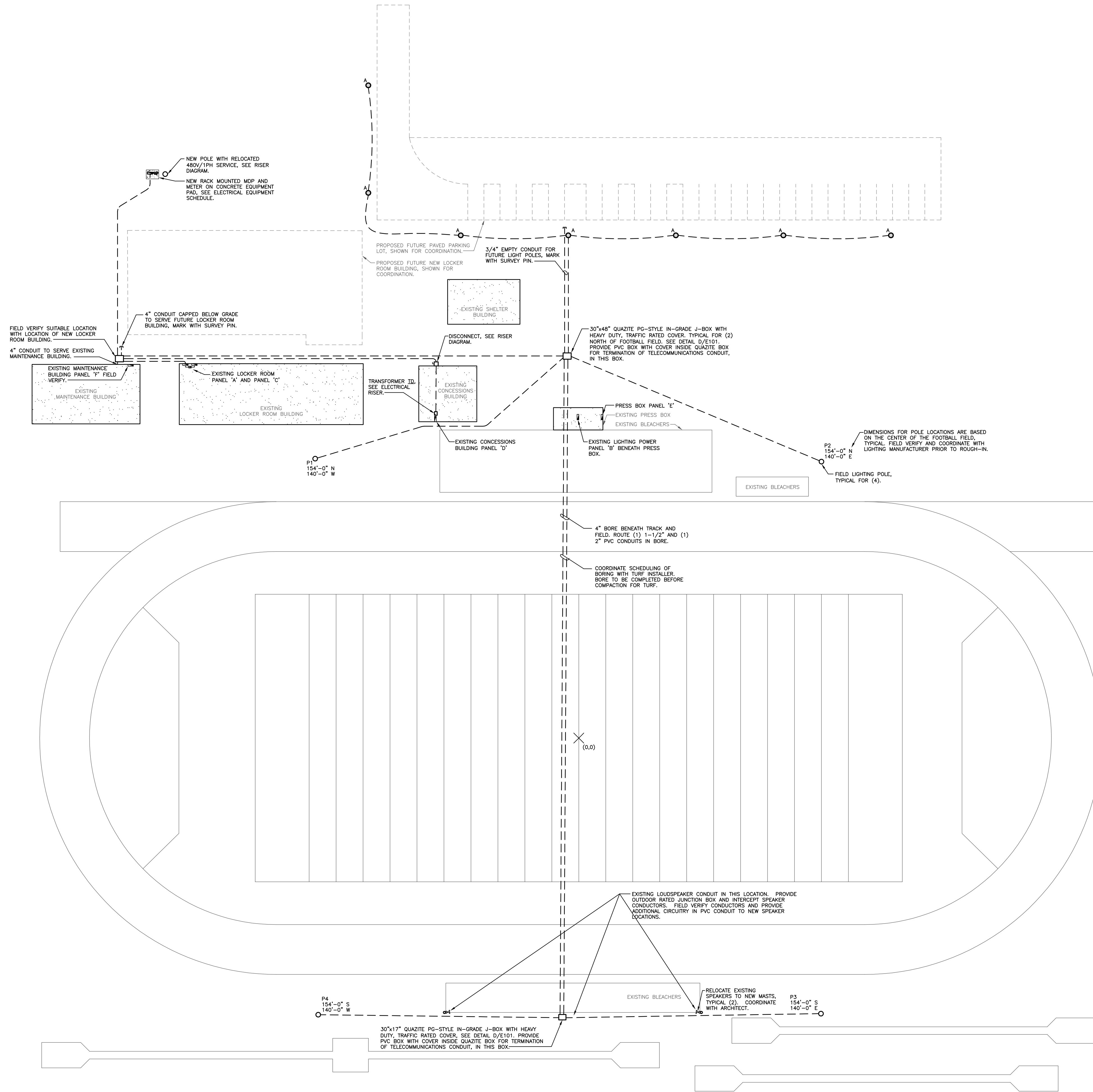
Dry type transformer for indoor installation, U.L. listed, compliant with IEEE, NEMA and ANSI standards, single-phase, 60 hertz, 480 volt primary, 120/240 volt single-phase secondary, (6) 2-1/2% full capacity taps, 150 degree C temperature rise, ventilated enclosure and internal vibration isolation core mounting. Provide NEC compliant signage for transformers served by remote disconnects.

Existing Panel 'B'
 Existing panelboard, 225A rated, 277/480 volt, 1phase/3 wire, with approximately 36" of branch mounting space, NEMA 3 enclosure with locking door. Square D HCN.

Provide branch devices:

| Ckt. | C/B | Load | Feeder | Remarks |
|------|------|------------------------|-----------|---------|
| 1. | 40/2 | Field Lighting Pole P1 | 2#8,#10G | A, B |
| 2. | 40/2 | Field Lighting Pole P2 | 2#8,#10G | A, B |
| 3. | 40/2 | Field Lighting Pole P3 | 2#4,#6G | A, B |
| 4. | 40/2 | Field Lighting Pole P4 | 2#4,#6G | A, B |
| 5. | 20/2 | Parking Lot Lighting | 2#12,#12G | A, B |
| 6. | 20/2 | Spare | --- | --- |

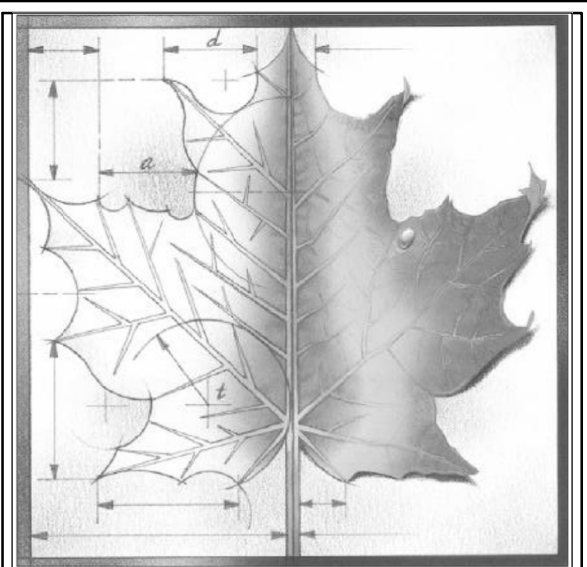
Remark Key:
 A. NEW circuit breaker and NEW feeder.
 B. Provide lock-out kit.



SPORTS COMPLEX LIGHTING PLAN

1" = 30'

ose ORAZEM & SCALORA ENGINEERING, P.A.
 Manhattan, Kansas
 Job No. 15011-1
 Copyright © Orazem & Scalora Engineering, P.A. 2017



BBN

BBN ARCHITECTS INC
 228 POYNTZ AVENUE
 MANHATTAN, KS 66502
 PH: 785-776-4912
 WWW.BBNARCHITECTS.COM

Information provided on the drawings regarding existing conditions has been obtained from the best sources available, but cannot be guaranteed in all respects. Contractor shall verify all such information prior to proceeding with any new work that may be affected. Include as part of the contract all work required to produce the indicated result. All drawings and written material appearing herein constitute the original and unpublished work of the Architect, and same may not be duplicated, used or disclosed without the written consent of the Architect.
 © BBN Architects, Inc.

REVISIONS:

| | |
|--|--|
| | |
| | |
| | |
| | |
| | |
| | |

PROFESSIONAL ENGINEER
 MICHAEL C. ORAZEM
 LICENSE NO. 11373
 03/28/17
 KANSAS
 PROFESSIONAL ENGINEER

Project Number: _____

Date: **03/28/2016**

Project Name: _____

WAMEGO SPORTS FIELD LIGHTING

Project Address:
**4290 Columbian Rd.
 Wamego, KS 66547**

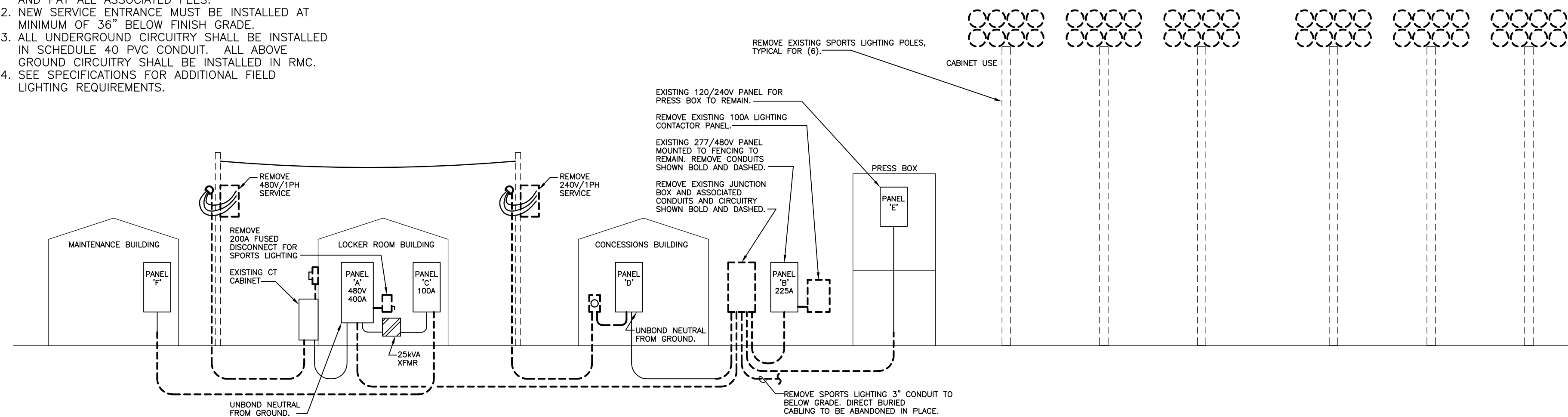
Sheet Title:
ELECTRICAL SITE PLAN - NEW WORK

Sheet: _____

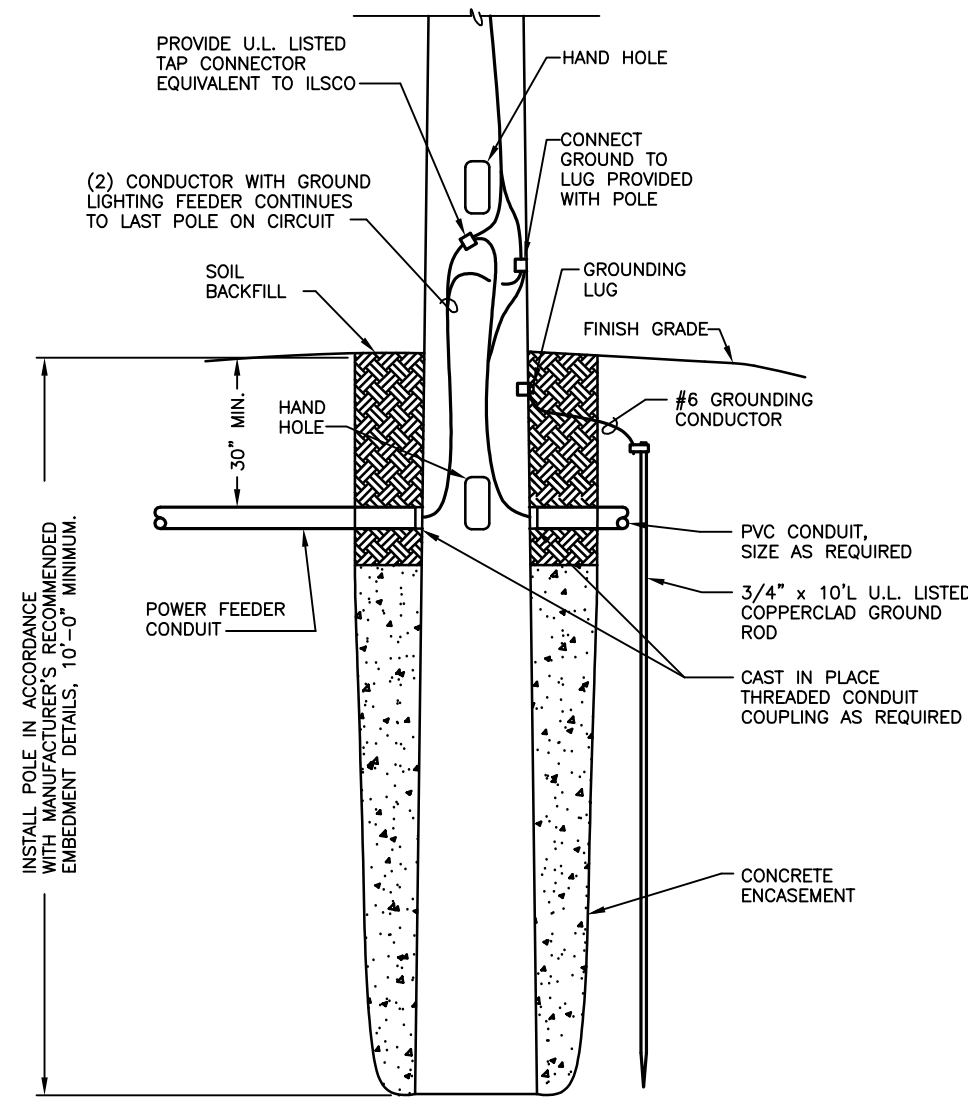
E100

OF 3

- NOTES:**
1. ELECTRICAL CONTRACTOR SHALL COORDINATE ALL ELECTRICAL SERVICE CONNECTION REQUIREMENTS AND RESPONSIBILITIES WITH THE WESTAR ENERGY AND PAY ALL ASSOCIATED FEES.
 2. NEW SERVICE ENTRANCE MUST BE INSTALLED AT MINIMUM OF 36" BELOW FINISH GRADE.
 3. ALL UNDERGROUND CIRCUITRY SHALL BE INSTALLED IN SCHEDULE 40 PVC CONDUIT. ALL ABOVE GROUND CIRCUITRY SHALL BE INSTALLED IN RMC. SEE SPECIFICATIONS FOR ADDITIONAL FIELD LIGHTING REQUIREMENTS.



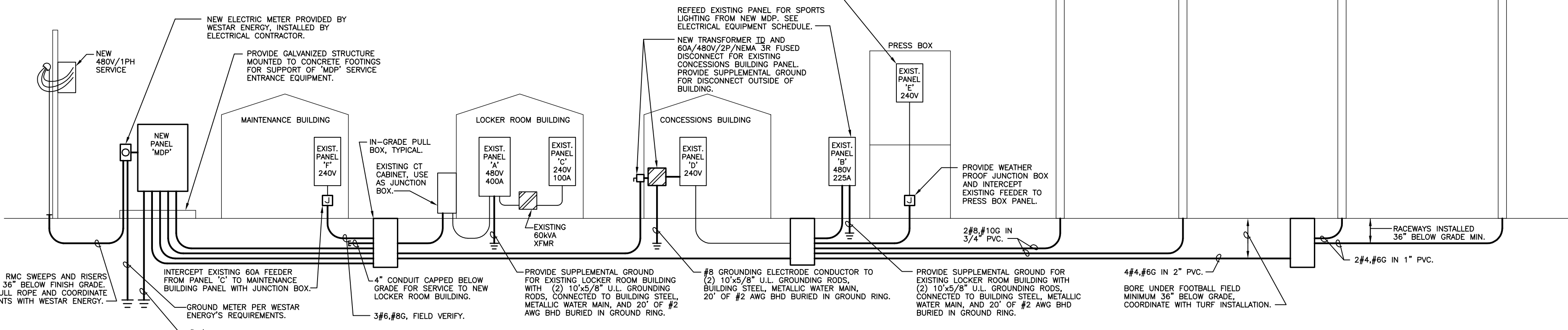
A ELECTRICAL RISER DIAGRAM - DEMOLITION
NO SCALE



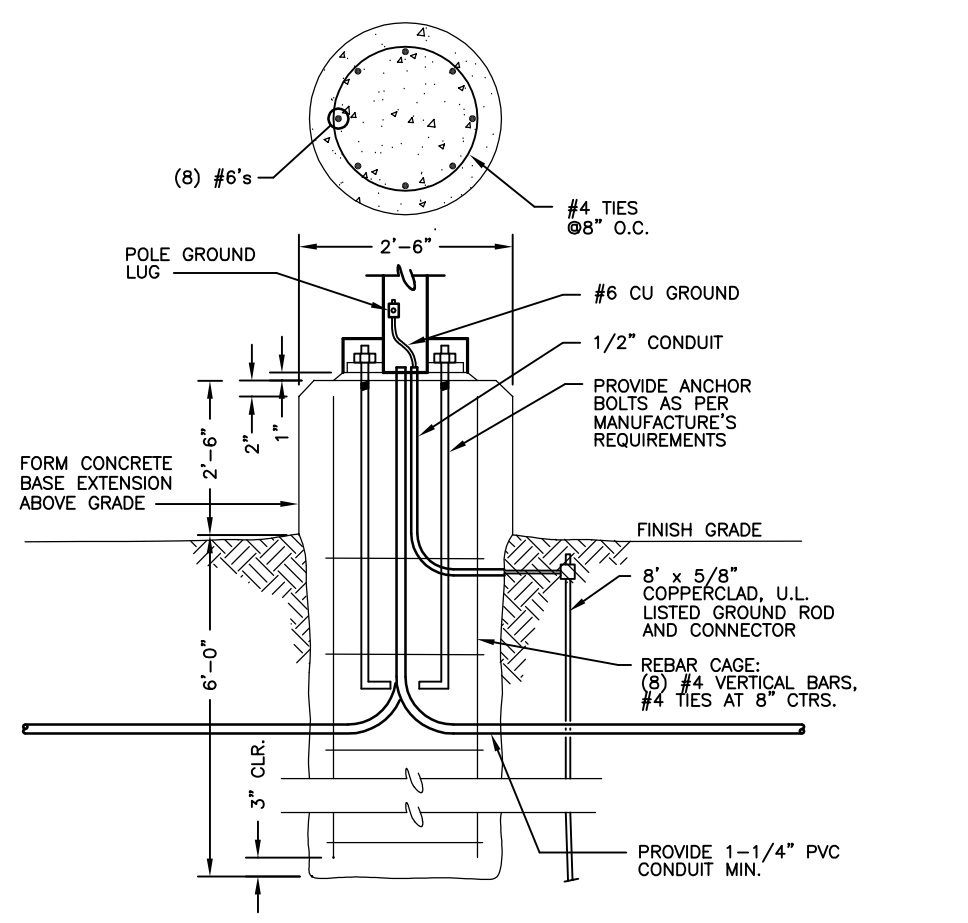
E FIELD LIGHTING POLE BASE DETAIL
NO SCALE

| POLE ID | NO. FIXT | MAX KVA | POLE HT | CIRCUIT |
|---------|----------|---------|---------|--------------|
| P1 | 15 | 11.5 | 70' | 480V/1PH/40A |
| P2 | 15 | 11.5 | 70' | 480V/1PH/40A |
| P3 | 17 | 13.1 | 70' | 480V/1PH/40A |
| P4 | 17 | 13.1 | 70' | 480V/1PH/40A |

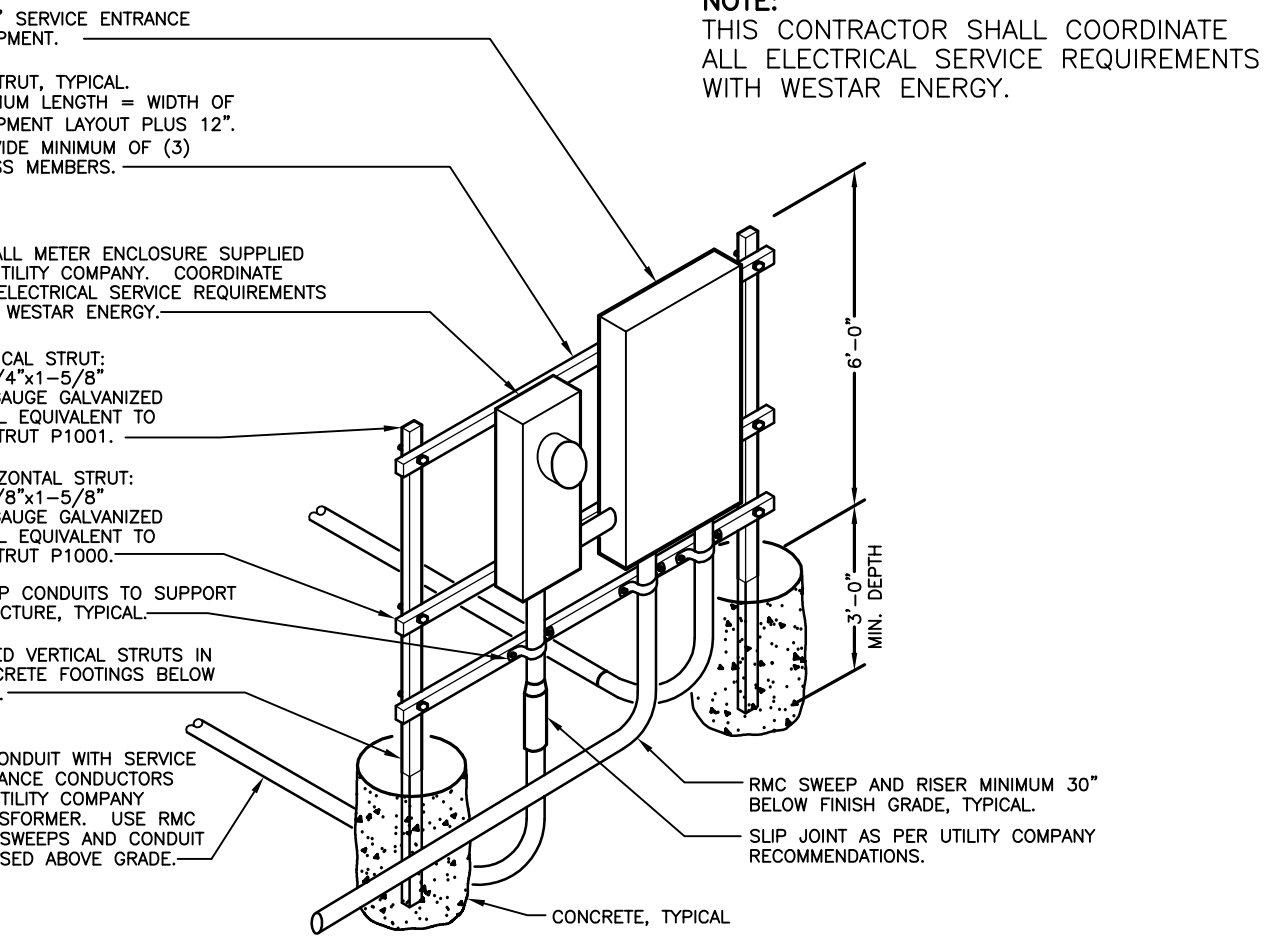
NOTE: SEE SPECIFICATIONS FOR FIELD LIGHTING INFORMATION



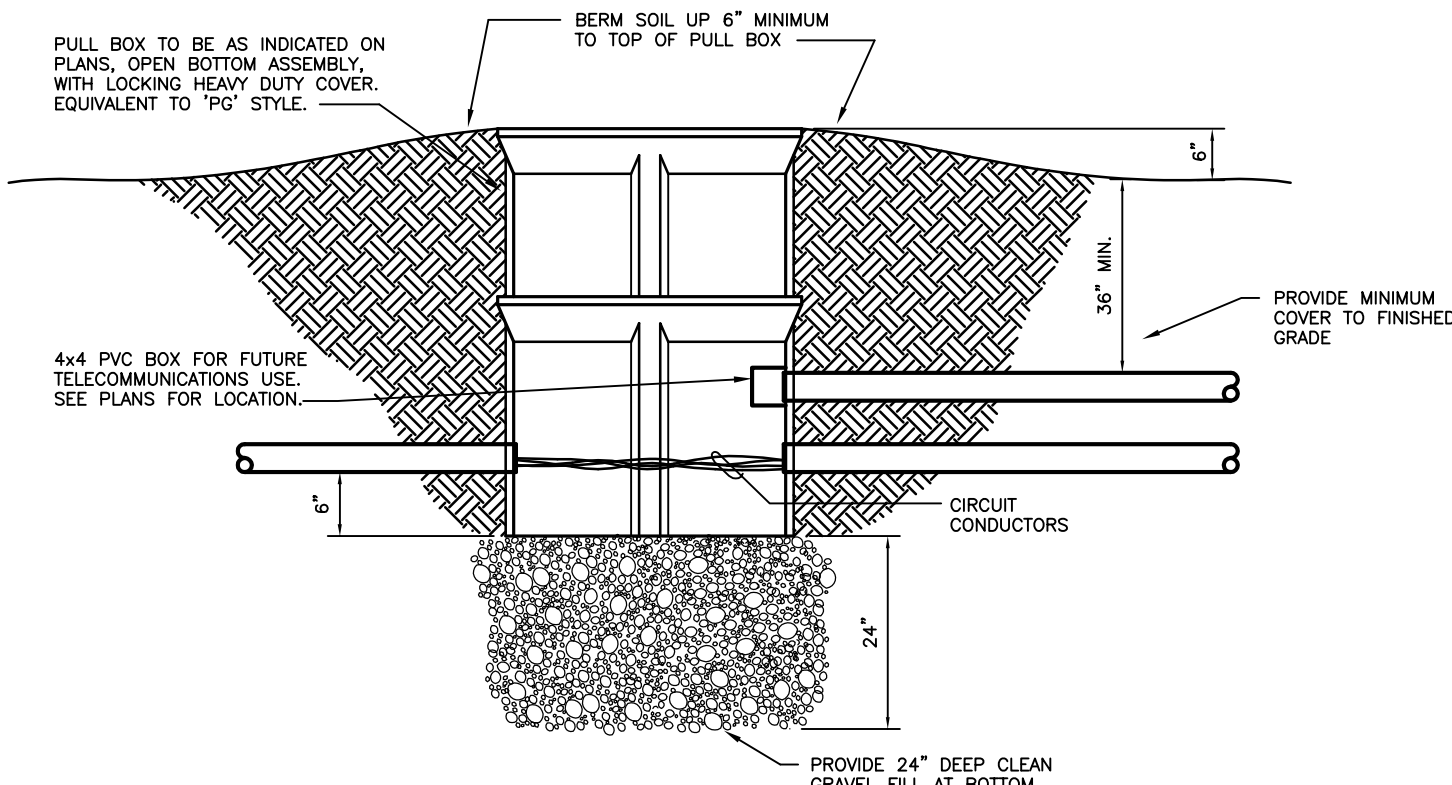
B ELECTRICAL RISER DIAGRAM - NEW WORK
NO SCALE



F PARKING LOT POLE BASE DETAIL
NO SCALE



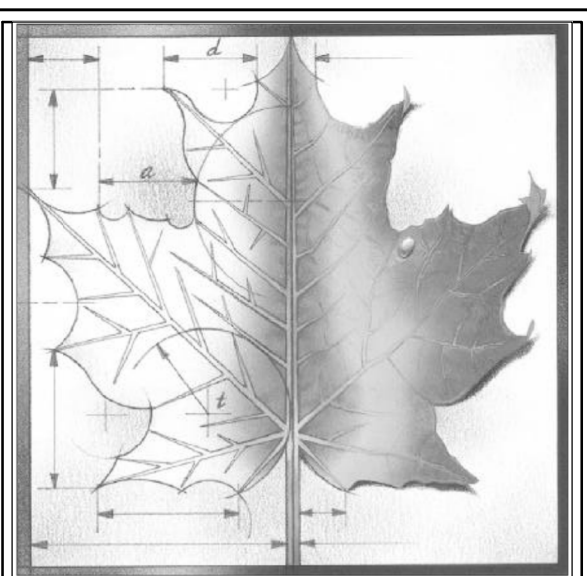
C ELECTRICAL SERVICE DETAIL
NO SCALE



D IN-GRADE PULL BOX DETAIL
NO SCALE

| MARK | SIZE | MANUF. | DESCRIPTION | LAMP |
|------|--------------------------------|--------|--|---------|
| A | 13-15/16" x 26-13/16" x 2-3/4" | Lumark | Series PRV Preval area site fixture with heavy-duty, single-piece, die-cast aluminum housing, polyester powder coated finish, low profile design, U.L. listed for wet location, -40 degree F minimum operating temperature, thermally isolated driver, and hand-hole access at base of pole. Minimum 70 CRI, and 80% rated lumen output for 100,000 hours. Provide fixture with 4,000K lumen package producing 10,261 lumens at 87 watts, Type IV throw. Provide type PS5-07-30WT square straight steel pole, 30" high, 5" nominal shaft dimension, vibration dampener, 0.188" (7 gauge) wall thickness, with 2-3/8" tenon mounting, and (1) fixture per pole. Finish for fixture and pole as selected by Architect. | 87W LED |

- NOTES:**
1. All fixtures to be supplied at 480 volt AC operation.
 2. See E/E3 for pole mounting base detail.
 3. Pole and fixture must meet windspeed test rating of 90 mph.



BBN

BBN ARCHITECTS INC
228 POYNTZ AVENUE
MANHATTAN, KS 66502
PH: 785-776-4912
WWW.BBNARCHITECTS.COM

Information provided on the drawings regarding existing conditions has been obtained from the best sources available, but cannot be guaranteed in all respects. Contractor shall verify all such information prior to proceeding with any new work that may be affected. Include as part of the contract all work required to produce the indicated result. All drawings and written material appearing herein constitute the original and unaltered work of the Architect, and same may not be duplicated, used or disclosed without the written consent of the Architect.
© BBN Architects, Inc.

REVISIONS:

| | |
|--|--|
| | |
| | |
| | |
| | |
| | |

Project Number:
Date: **03/28/2016**
Project Name:
WAMEGO SPORTS FIELD LIGHTING
Project Address:
**4290 Columbian Rd.
Wamego, KS 66547**

Sheet Title:
ELECTRICAL DETAILS & SCHEDULES

Sheet:
E101
OF: **3**