

PARKING LIGHT FIXTURE SCHEDULE				
MARK	SIZE	MANUF.	DESCRIPTION	LAMP
A	13-15/16" x 26-13/16" x 2-3/4"	Lumark	Series PRV Preval area site fixture with heavy-duty, single-piece, die-cast aluminum housing, polyester powder coated finish, low profile design, U.L. listed for wet location, -40 degree F minimum operating temperature, thermally isolated driver, and hand-hole access at base of pole. Minimum 70 CRI, and 80% rated lumen output for 100,000 hours. Provide fixture with 4,000K lumen package producing 6,192 lumens at 57 watts, Type III throw. Provide type PS5-07-30WT square straight steel pole, 15' high, 5" nominal shaft dimension, vibration dampener, 0.188" (7 gauge) wall thickness, with 2-3/8" tenon mounting, and (2) fixtures per pole. Finish for fixture and pole to match existing parking lot.	57W LED

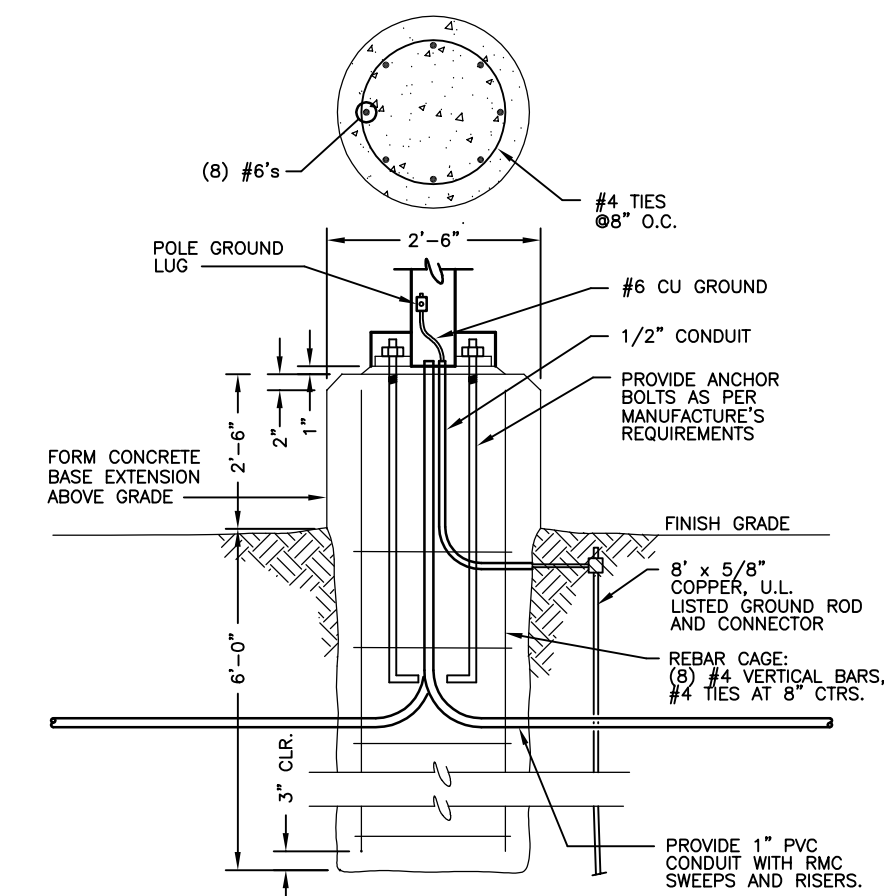
NOTES:
 1. All fixtures to be supplied at 480 volt AC operation.
 2. See A/E101 for pole mounting base detail.
 3. Pole and fixture must meet windspeed test rating of 90 mph.

GENERAL ELECTRICAL NOTES

- Do not scale these drawings.
- These drawings were produced from original drawings, field survey, and measurements. Existing site and building characteristics which are represented on these drawings are believed to be accurate. However, the Contractor shall verify all conditions, materials, and sizes at the site. The Contractor shall verify locations and sizes of all below grade and above grade circuitry, and modify as required for new work.
- Submittal of detailed electrical conduit installation shop drawings are not required. However, the Contractor shall be responsible for field verification of all dimensions and clearances for all system layouts. This shall be accomplished prior to installation.
- These drawings are a schematic representation of the work that is to be accomplished by this Contract.
- Lack of coordination between trades will not be a basis for change orders. Rework of already completed work to accommodate other trades will be performed at the Contractors' expense.
- Where services to existing equipment, devices or systems which are to remain are interrupted in this work, such services shall be restored so that the existing systems are left in working order.
- See Specifications for additional requirements.
- Coordinate cutting and patching of walls, floors, ceilings, concrete and asphalt with General Contractor. See specification section 017300.

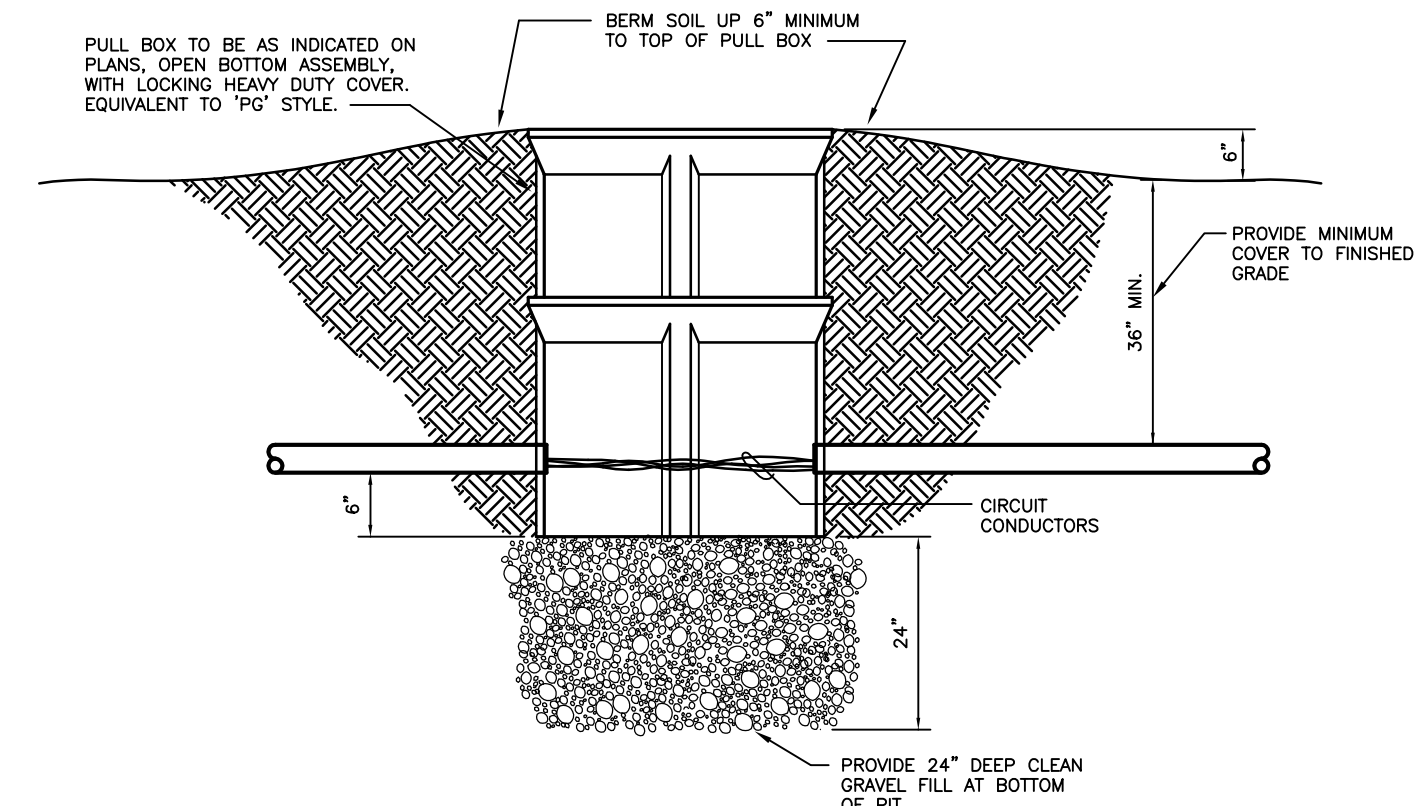
ELECTRICAL SYMBOLS LEGEND

[Symbol]	Flush junction box
[Symbol]	Electrical disconnect switch
[Symbol]	Conduit concealed in wall or ceiling
[Symbol]	In-floor conduit
[Symbol]	Home-run to panelboard with conductors as indicated. Do not share neutrals unless noted otherwise.
[Symbol]	Panelboard
[Symbol]	Transformer
[Symbol]	Electrical meter
[Symbol]	Existing device
[Symbol]	Circuit breaker
[Symbol]	U.N.O. Unless noted otherwise
[Symbol]	A.F.F. Above finished floor
[Symbol]	N.I.C. Not in contract
[Symbol]	TYP Typical
[Symbol]	G.C. General Contractor

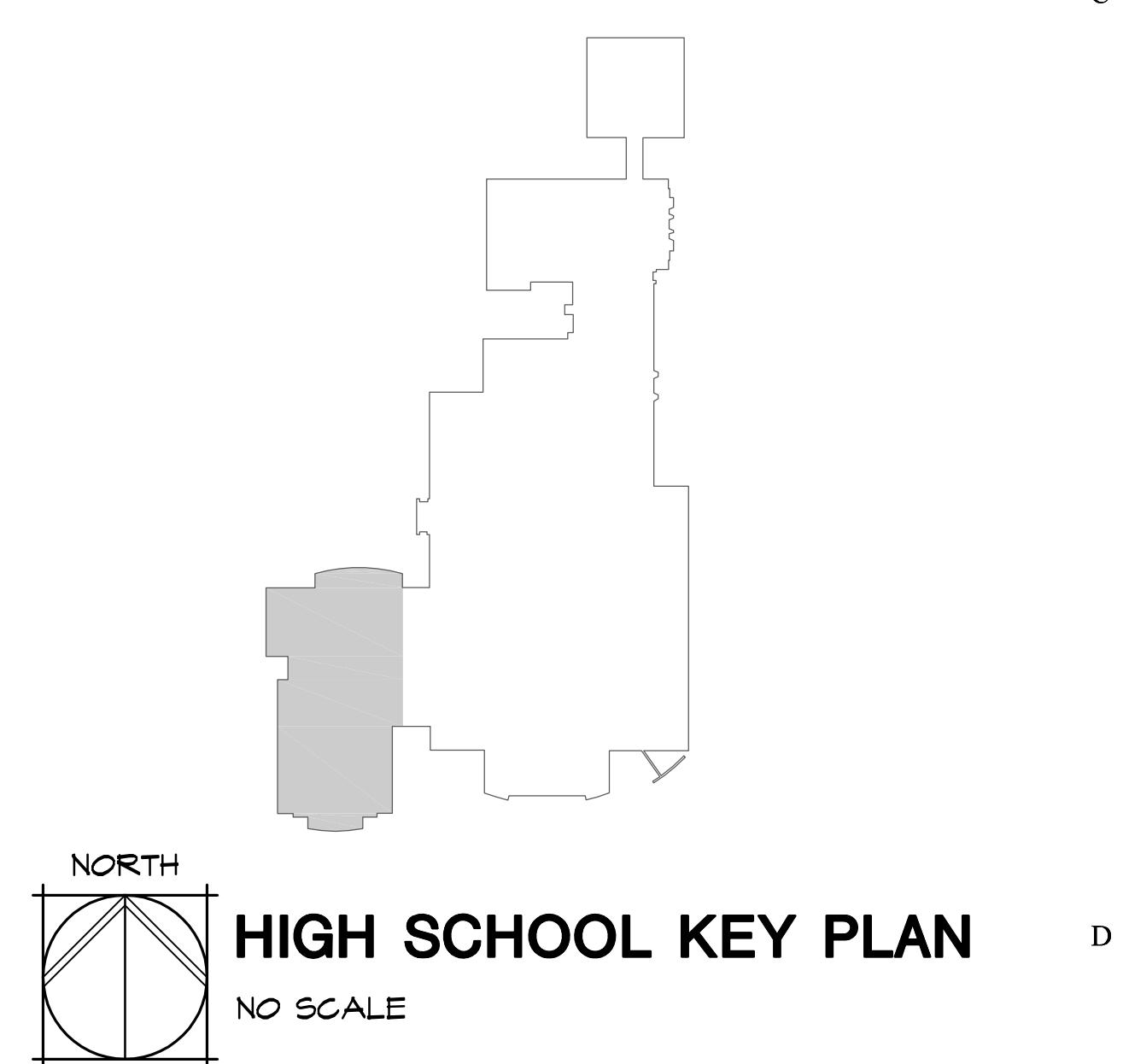
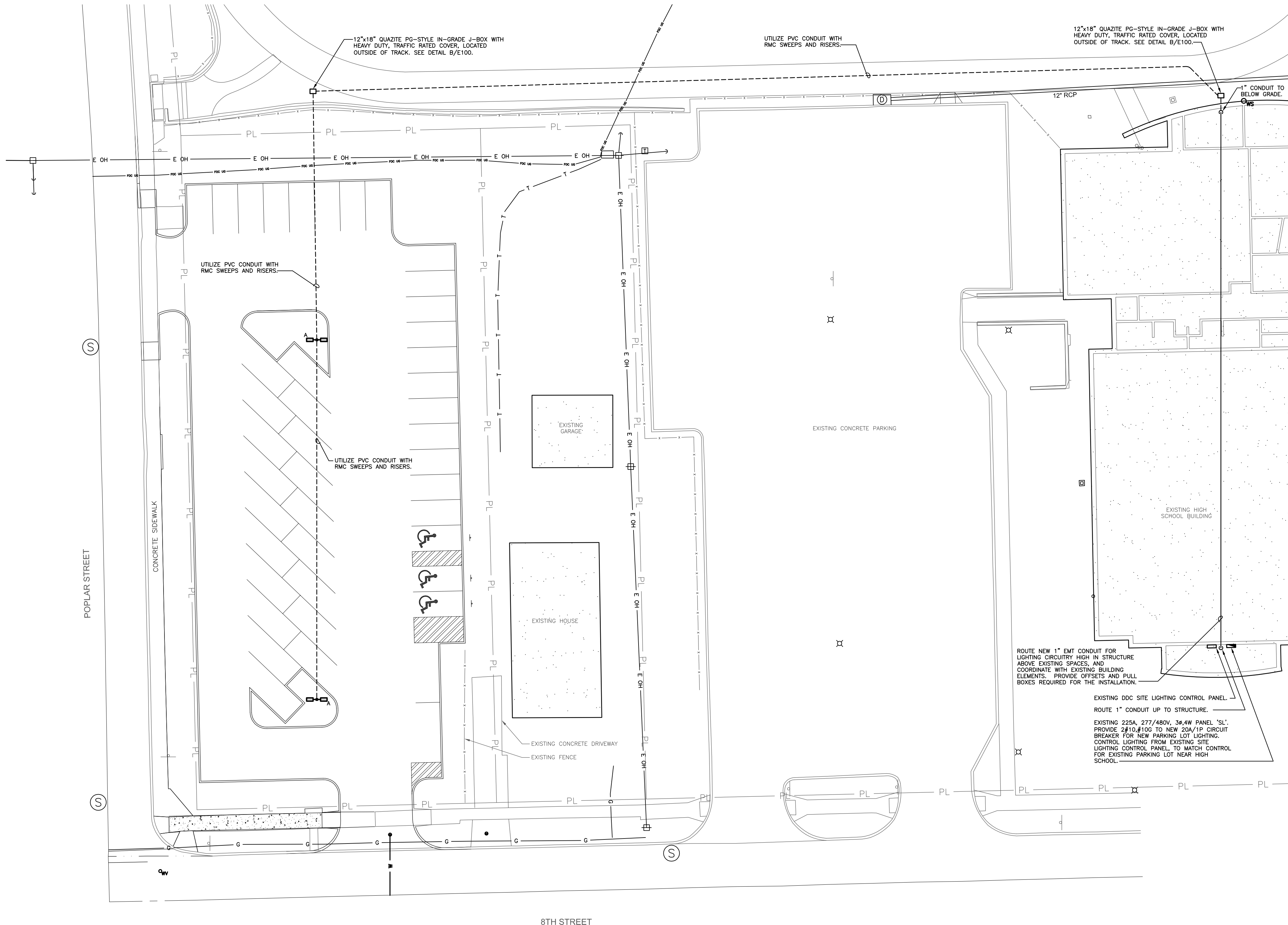


NOTES:
 1. Utilize wet location rated connectors for all wire terminations inside of the pole.
 2. Before connecting ungrounded conductors to the circuit breaker, test the continuity of the grounding conductor from the pole back to the panel.

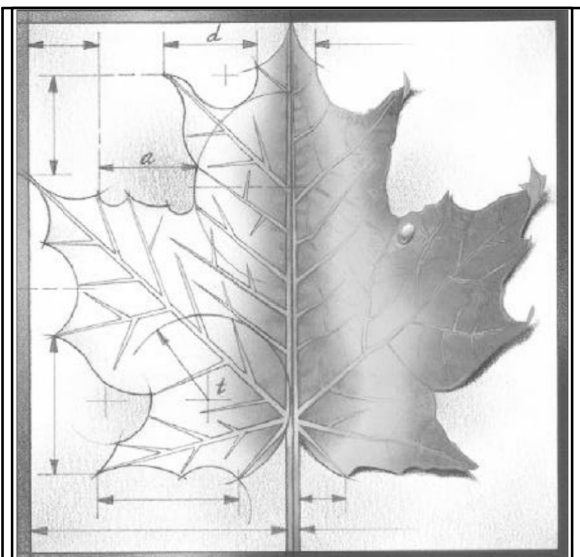
A PARKING LOT POLE BASE DETAIL
NO SCALE



B IN-GRADE PULL BOX DETAIL
NO SCALE



8th & POPLAR PARKING LOT LIGHTING PLAN
1" = 20'



BBN

BBN ARCHITECTS INC
 228 POYNTZ AVENUE
 MANHATTAN, KS 66502
 PH: 785-776-4912
 WWW.BBNARCHITECTS.COM

Information provided on the drawings regarding existing conditions has been obtained from the best sources available, but cannot be guaranteed in all respects. Contractor shall verify all such information prior to proceeding with any new work that may be affected. Include as part of the contract all work required to produce the indicated result. All drawings and written material appearing herein constitute the original and unaltered work of the Architect, and same may not be duplicated, used or disclosed without the written consent of the Architect.
 ©BBN Architects, Inc.

REVISIONS:	DESCRIPTION



Project Number:
 Date: **04/04/2017**
 Project Name:
USD 320 WAMEGO 8th & POPLAR PARKING LOT
 Project Address:
Wamego, KS 66547

Sheet Title:
ELECTRICAL

Sheet:
E101
 OF: **1**

ose ORAZEM & SCALORA ENGINEERING, P.A.
 Manhattan, Kansas
 Job No. 15011-1
 Copyright © Orazem & Scalora Engineering, P.A. 2017