



USD 320-Phase 1-Bid Package 2- Sports Lighting

Addendum 1

Issue Date: 3-31-17

Architect: BBN Architects Inc.

Construction Manager: Coonrod & Associates Construction Co., Inc.

Owner: USD 320 Wamego

The attached documents and items shall hereby become part of the Construction Documents for the referenced project above.

GENERAL ELECTRICAL NOTES

1. Do not scale these drawings.
2. These drawings were produced from original drawings, field survey, and measurements. Existing site and building characteristics which are represented on these drawings are believed to be accurate. However, the Contractor shall verify all conditions, materials, and sizes at the site. The Contractor shall verify locations and sizes of all below grade and above grade circuitry, and modify as required for new work.
3. Submittal of detailed electrical conduit installation shop drawings are not required. However, the Contractor shall be responsible for field verification of all dimensions and clearances for all system layouts. This shall be accomplished prior to installation.
4. These drawings are a schematic representation of the work that is to be accomplished by this Contract.
5. Lack of coordination between trades will not be a basis for change orders. Rework of already completed work to accommodate other trades will be performed at the Contractors' expense.
6. Where services to existing equipment, devices or systems which are to remain are interrupted in this work, such services shall be restored so that the existing systems are left in working order.
7. See Specifications for additional requirements.
8. Coordinate cutting and patching of walls, floors, ceilings, concrete and asphalt with General Contractor. See specification section 017300.

ELECTRICAL EQUIPMENT SCHEDULE

Main Distribution Panel 'MDP' Schedule
 Distribution Panelboard, service entrance rated, 400 ampere, 277/480 volt, 1phase/3wire, 400 ampere Main Circuit Breaker, full capacity neutral, copper bussing, equipment ground, 32,000 ampere integrated equipment short circuit rating with 93" branch mounting space, NEMA 3 enclosure with locking door, and capacity for 400 ampere/2 pole branches. Physical size: 86"H x 44"W x 9.5"D. Equivalent to Square D HCR-U.

Provide branch devices:

Ckt.	C/B	Load	Feeder	Serves
1.	40/2	Transformer TD	3#8,#10G	Concessions Building
2.	200/2	Panel A	3#3/0,#6G	Existing Locker Room
3.	200/2	Spare	FUTURE	Future Locker Room
4.	200/2	Panel B	3#4/0,#4G	Field Lighting
5.	100/2	Spare	---	---
6.	100/2	Spare	---	---
7.	100/2	Spare	---	---

TRANSFORMERS

Mark	KVA	Mounting	Secondary Conductors	GEC
ID	15	Suspended	3#6,#8G	#8

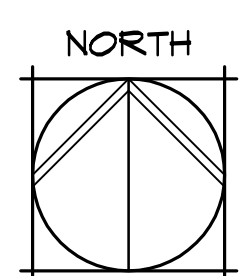
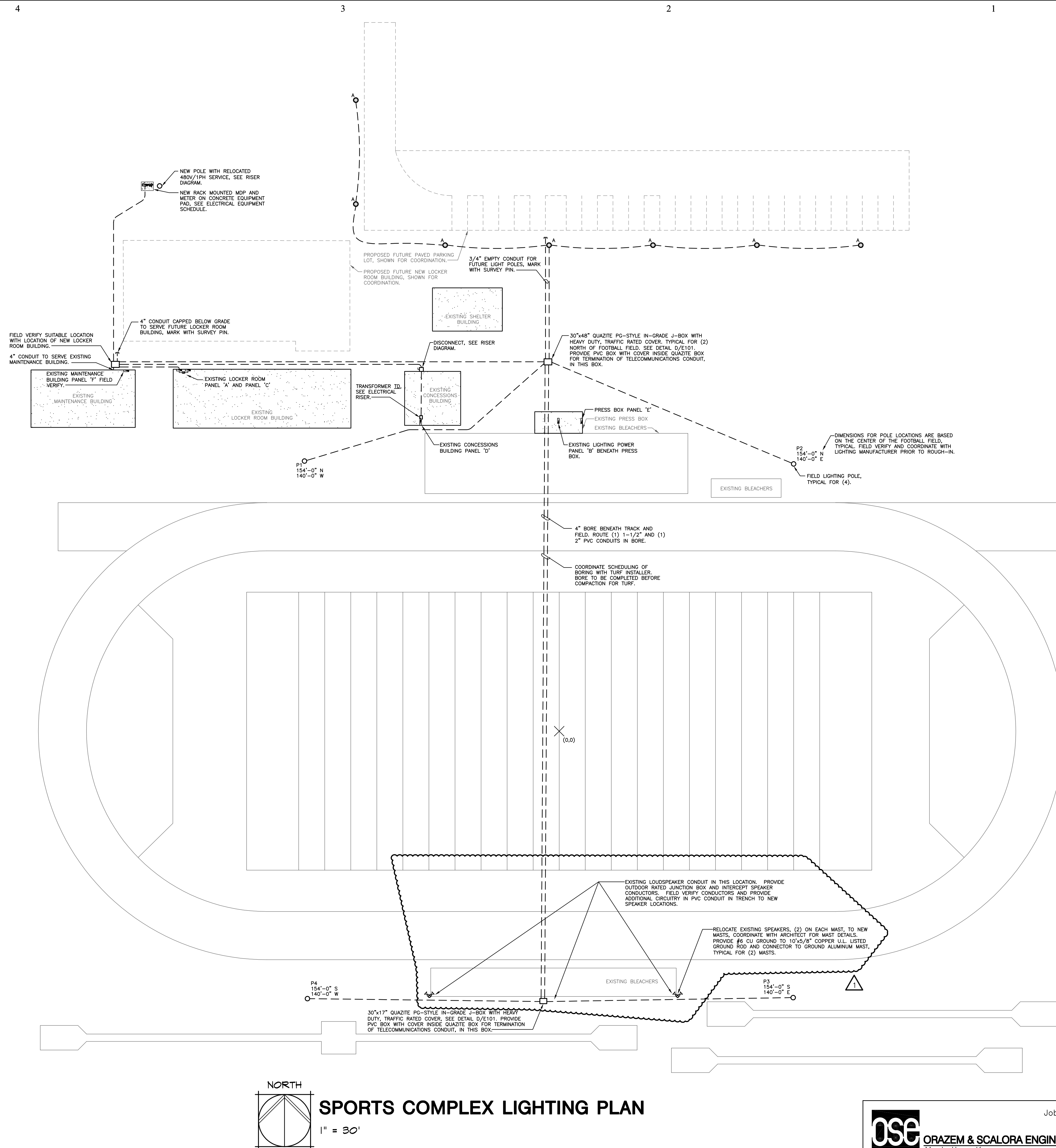
Dry type transformer for indoor installation, U.L. listed, compliant with IEEE, NEMA and ANSI standards, single-phase, 60 hertz, 480 volt primary, 120/240 volt single-phase secondary, (6) 2-1/2% full capacity taps, 150 degree C temperature rise, ventilated enclosure and internal vibration isolation core mounting. Provide NEC compliant signage for transformers served by remote disconnects.

Existing Panel 'B'
 Existing panelboard, 225A rated, 277/480 volt, 1phase/3 wire, with approximately 36" of branch mounting space, NEMA 3 enclosure with locking door. Square D HCN.

Provide branch devices:

Ckt.	C/B	Load	Feeder	Remarks
1.	40/2	Field Lighting Pole P1	2#8,#10G	A, B
2.	40/2	Field Lighting Pole P2	2#8,#10G	A, B
3.	40/2	Field Lighting Pole P3	2#4,#6G	A, B
4.	40/2	Field Lighting Pole P4	2#4,#6G	A, B
5.	20/2	Parking Lot Lighting	2#12,#12G	A, B
6.	20/2	Spare	---	---

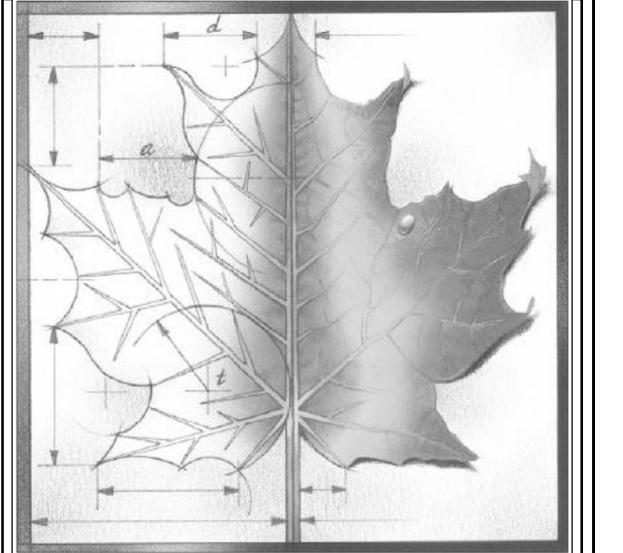
Remark Key:
 A. NEW circuit breaker and NEW feeder.
 B. Provide lock-out kit.



SPORTS COMPLEX LIGHTING PLAN

1" = 30'

ose ORAZEM & SCALORA ENGINEERING, P.A.
 Manhattan, Kansas
 Job No. 15011-1
 Copyright © Orazem & Scalora Engineering, P.A. 2017



BBN

BBN ARCHITECTS INC
 228 POYNTZ AVENUE
 MANHATTAN, KS 66502
 PH: 785-776-4912
 WWW.BBNARCHITECTS.COM

Information provided on the drawings regarding existing conditions has been obtained from the best sources available, but cannot be guaranteed in all respects. Contractor shall verify all such information prior to proceeding with any new work that may be affected. Include as part of the contract all work required to produce the indicated result. All drawings and written material appearing herein constitute the original and unpublished work of the Architect, and same may not be duplicated, used or disclosed without the written consent of the Architect.
 © BBN Architects, Inc.

REVISIONS:

3/30/17	

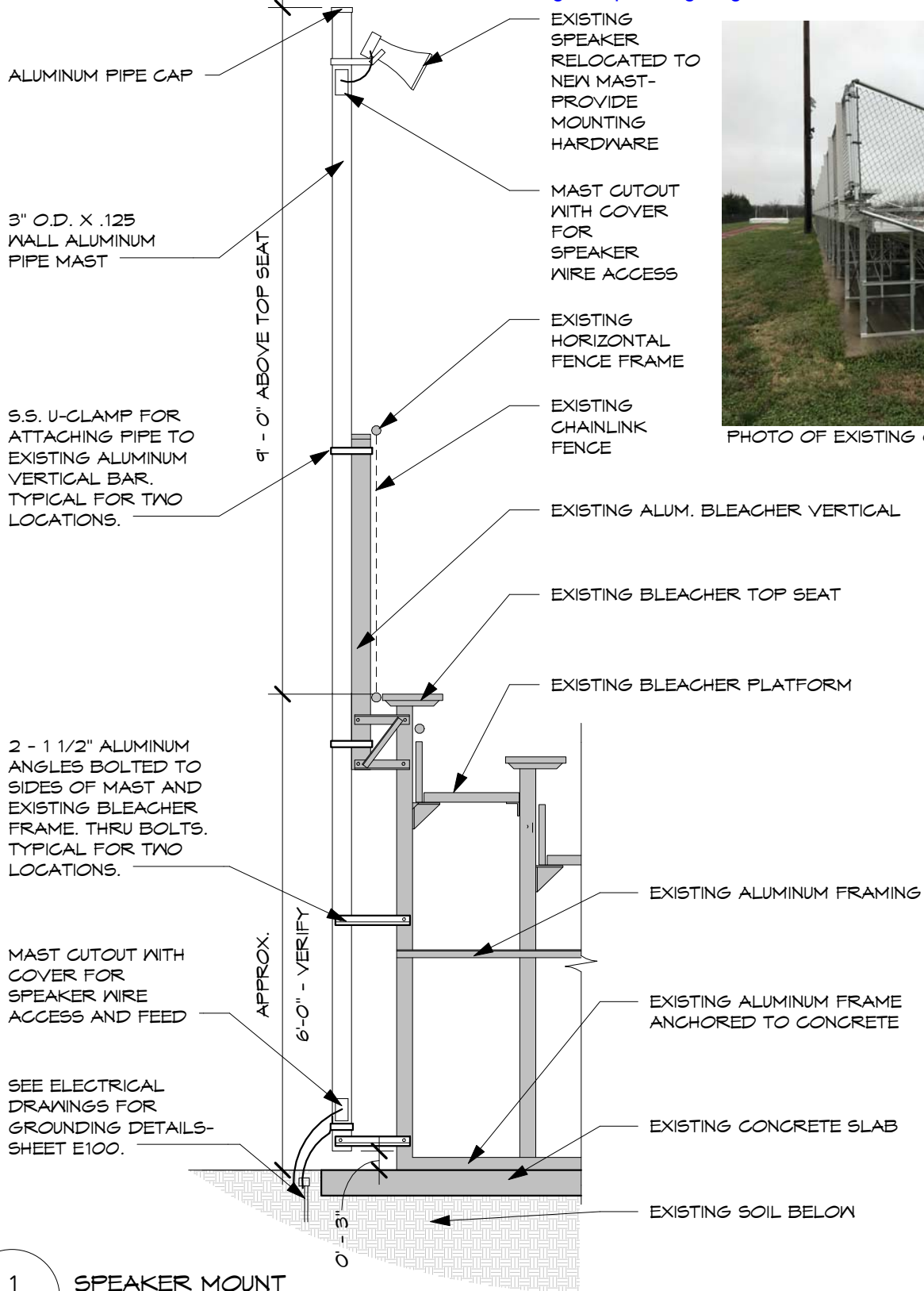
Project Number:
 Date: 03/28/2017

Project Name:
WAMEGO SPORTS FIELD LIGHTING

Project Address:
 4290 Columbian Rd.
 Wamego, KS 66547

Sheet Title:
ELECTRICAL SITE PLAN - NEW WORK

Sheet:
E100
 OF 3



1 SPEAKER MOUNT
AS-100 1/2" = 1'-0"

Revision	Description	Date
----------	-------------	------

BBN

BBN ARCHITECTS INC
228 POYNTZ AVENUE,
MANHATTAN, KS 66502
PHONE: (785) 744-4012
WWW.BBNARCHITECTS.COM

USD 320 SPORTS COMPLEX

SPORTS FIELD LIGHTING PACKAGE

WAMEGO, KS
USD 320-Phase 1-Bid Package 2-Sports Lighting

SPEAKER MOUNT

DATE: **3/29/17**

SHEET:

AS-100
Page 3 of 3